

UMU Scan for Windows Mobile User Manual

20 January 2010
Version 1.4

“UMU Scan” is a registered trademark of UMU Limited and UMU Scan product names and symbols/logos are either trademarks or registered trademarks of UMU Limited. All product names referenced herein are trademarks or registered trademarks of their respective companies. UMU Limited disclaims proprietary interest in the marks and names of others. Although UMU Limited makes every effort to ensure that this information is accurate, UMU Limited will not be liable for any errors or omission of facts contained herein. UMU Limited reserves the right to modify specifications cited in this document without prior notice.

Companies, names, and data used in examples herein are fictitious unless otherwise noted. No part of this document may be reproduced or transmitted in any form or by any means, electronic or mechanical, for any purpose, without the express written permission of UMU Limited.

Copyright ©2007 - 2009 UMU Limited. All rights reserved.

HOW THIS MANUAL IS ORGANISED	5
PDF DOCUMENT	5
FOR MORE INFORMATION	5
UMU SCAN FOR WINDOWS MOBILE	6
KEY FEATURES	6
INSTALLING UMU SCAN	7
MICROSOFT® WINDOWS® POCKET PC DEVICE	7
MICROSOFT® WINDOWS® SMARTPHONE DEVICE	7
USING UMU SCAN	8
MICROSOFT® WINDOWS® POCKET PC DEVICE	8
<i>Running UMU Scan through the Programs menu.....</i>	8
<i>Running UMU Scan through the icon on the Today page</i>	10
<i>Status.....</i>	10
<i>Scanning.....</i>	12
<i>Quarantine.....</i>	14
<i>Updates</i>	15
<i>Settings.....</i>	17
<i>Exiting.....</i>	22
<i>Uninstalling.....</i>	22
MICROSOFT® WINDOWS® SMARTPHONE DEVICE	23
<i>Running UMU Scan.....</i>	23
<i>Status.....</i>	25
<i>Scanning.....</i>	26
<i>Quarantine.....</i>	28
<i>Updates</i>	29
<i>Settings.....</i>	31
<i>Exiting.....</i>	36
<i>Uninstalling.....</i>	36
TECHNICAL SUPPORT	37
IN PROGRAM	37
FREQUENTLY ASKED QUESTIONS	37
EMAIL SUPPORT	37
TELEPHONE SUPPORT	37
ABOUT UMU LIMITED	38

Figure 1: Activation	8
Figure 2: Enter product key.....	9
Figure 3: License	9
Figure 4: License details	10
Figure 5: Menu screen.....	10
Figure 6: Status on the menu screen	11
Figure 7: Status screen	11
Figure 8: Scan button	12
Figure 9: Scan screen	12
Figure 10: Scan report screen	13
Figure 11: Scan log screen	13
Figure 12: Quarantine button	14
Figure 13: Quarantine screen	14
Figure 14: Update button.....	15
Figure 15: Update pop up.....	16
Figure 16: Update screen.....	16
Figure 17: Settings button	17
Figure 18: Options screen.....	17
Figure 19: Active scan settings screen	18
Figure 20: Scan settings screen	19
Figure 21: Update settings screen.....	20
Figure 22: Detection settings screen.....	21
Figure 23: Log settings screen.....	21
Figure 24: Exit button	22
Figure 25: Activation.....	23
Figure 26: Enter product key.....	23
Figure 27: License	24
Figure 28: License details	24
Figure 29: Smartphone menu screen.....	25
Figure 30: Status on the menu screen	25
Figure 31: Status screen	26
Figure 32: Scan icon.....	26
Figure 33: Scan screen	27
Figure 34: Scan report screen	27
Figure 35: Scan log screen	28
Figure 36: Quarantine icon.....	29
Figure 37: Quarantine screen	29
Figure 38: Update icon	30
Figure 39: Update confirmation	30
Figure 40: Update screen.....	31
Figure 41: Options icon	31
Figure 42: Options screen.....	32
Figure 43: Active scan settings screen	32
Figure 44: Scan settings screen	33
Figure 45: Update settings screen.....	34
Figure 46: Detection settings screen.....	35
Figure 47: Log settings screen.....	35
Figure 48: Exit button	36

How This Manual is Organised

This User Manual is divided into the following chapters:

Introduction: Provides general information about UMU Scan.

Installing UMU Scan: This section gives instructions on installing UMU Scan onto your device.

Using UMU Scan: Describes how to use UMU Scan.

Technical Support: Describes how to get help with using UMU Scan.

About UMU Limited: Describes the company background and products.

PDF Document

This manual is provided in PDF (Portable Document Format). The PDF document can be used for online viewing and printing using Adobe® Acrobat® Reader. When printing the manual, please print the entire manual, including the copyright and disclaimer statements.

For More Information

Visit UMU Limited at <http://www.umuglobal.com/> for documentation, training, downloads, and service and support contacts.

In our constant attempts to improve our documentation, we would welcome your feedback. If you have any questions, comments, or suggestions about this or any other UMU document, please contact us at documentation@umuglobal.com.

UMU Scan for Windows Mobile

UMU Scan protects your Pocket PC or Smartphone device against malicious code attacks.

UMU Scan scans all files on your device both on demand and on access. All infected files are immediately quarantined to protect your device and your data.

To work effectively, antivirus software must be regularly updated with the latest virus definitions. UMU Scan will prompt you to update regularly and can be updated manually either through the Today screen icon (Pocket PC only) or through the main menu screen in the program.

Key Features

UMU Scan offers the following key features:

- The program has been designed and created with Pocket PCs and Smartphones devices in mind so it is compact and efficient.
- Fast efficient scan process.
- Easy to use interface.
- Real time protection of files received via Bluetooth™, MMS, SMS, WiFi, and Infrared.
- User configurable automatic updates.
- Fast, optimised, and secure update process.
- Viruses automatically quarantined.
- On demand scanning of entire device including memory cards.
- Easily installed and uninstalled.

Installing UMU Scan

Microsoft® Windows® Pocket PC Device

You will be provided with a CAB file. To install the program you need to place this in the Temporary folder on your device and then run it.

UMU Scan runs automatically upon installation; we recommend you update the product immediately to ensure you have the most up to date virus definitions. The program will now be accessible using the icon on the Today page and through the Programs menu on your device.

Microsoft® Windows® Smartphone Device

You will be provided with a CAB file. To install the program; you need to place this in the Temporary folder on your device and then run it.

UMU Scan runs automatically upon installation; we recommend you update the product immediately to ensure you have the most up to date virus definitions.

Using UMU Scan

Microsoft® Windows® Pocket PC Device

Running UMU Scan through the Programs menu

Press Start and choose Programs.

Scroll down to UMU Scan and click the icon; this will run UMU Scan and product activation will start.

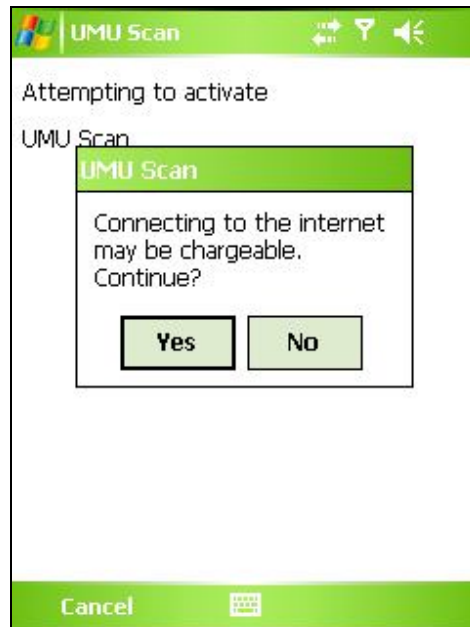


Figure 1: Activation

Next, you will be asked to enter your Product Key. If the server has already found your license this step will be bypassed.



Figure 2: Enter product key

Once a valid product key has been entered, you will be asked to accept the license.

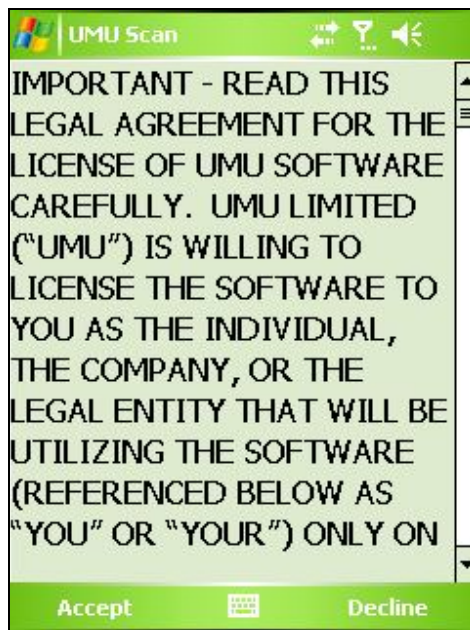


Figure 3: License

Finally, you will be shown your license details.

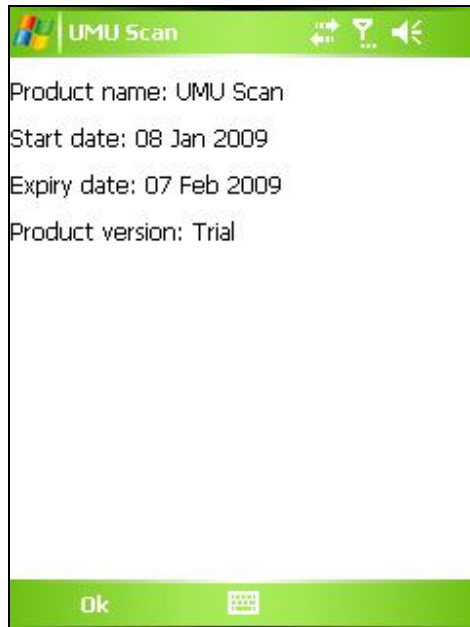


Figure 4: License details

Running UMU Scan through the icon on the Today page

Select the UMU Scan icon on your today page and a pop up box will appear with two options. Choose UMU Scan and the welcome screen will appear, followed by the menu screen.

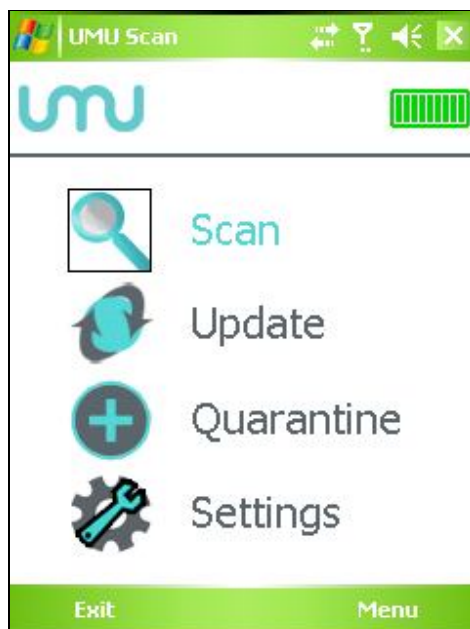


Figure 5: Menu screen

Status

For information about when the last scan was performed and if an update is due choose Status from the main menu.

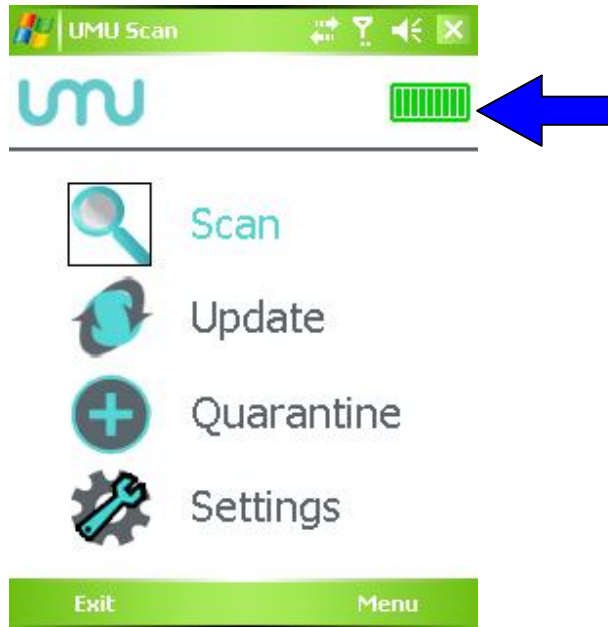


Figure 6: Status on the menu screen

Green indicates that both active scan and scan prompts are enabled, update prompts are enabled, a scan has run recently, and the program is up to date.
 Amber indicates that scan prompts are disabled or it has been over a week since the last update or it has been over two weeks since the last scan.
 Red indicates that active scan is disabled, or it has been more than two weeks since the last update, or the action on detection is set to "Log only".



Figure 7: Status screen

Scanning

On the main menu screen choose the Scan button and the scan will start.

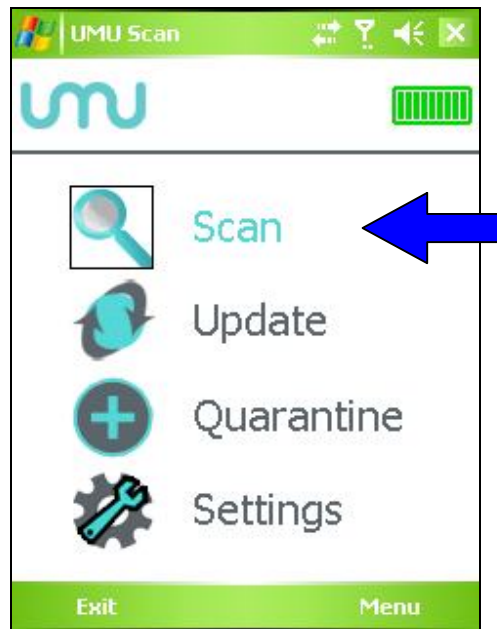


Figure 8: Scan button

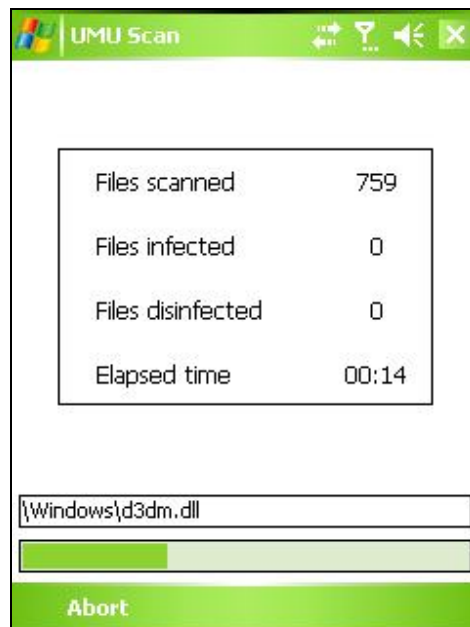


Figure 9: Scan screen

If any viruses are found during the scan, they are automatically quarantined. If you wish to stop the scan, click the Abort button. You will be asked whether you want to abort the scan. If you do not want to choose No and the scan will continue to the end as normal. If you do want to, choose Yes and the scan will stop. When the scan completes or is aborted, the scan report screen appears.

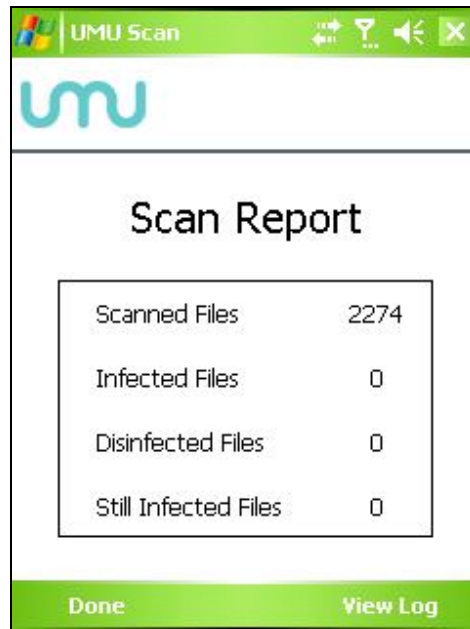


Figure 10: Scan report screen

At this point, you have the option to either return to the menu screen or go on to view the full log. If you choose to View Log, the scan log screen appears:

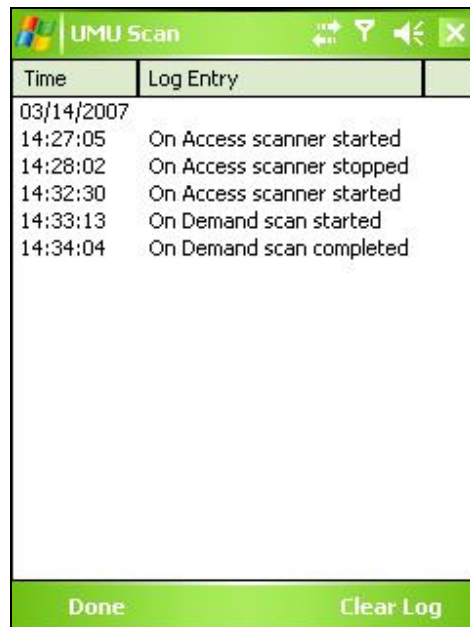


Figure 11: Scan log screen

The log screen details the time and date of the following actions:

- Scan started
- Scan completed
- Scan aborted
- Viruses found and quarantined
- Viruses restored

- Viruses deleted

Once you have reviewed the details, click Done to return to the scan report screen then press Done to return to the main menu screen.

Quarantine

All the viruses found are quarantined in an encrypted file. To view the quarantined files, click Quarantine in the main menu.

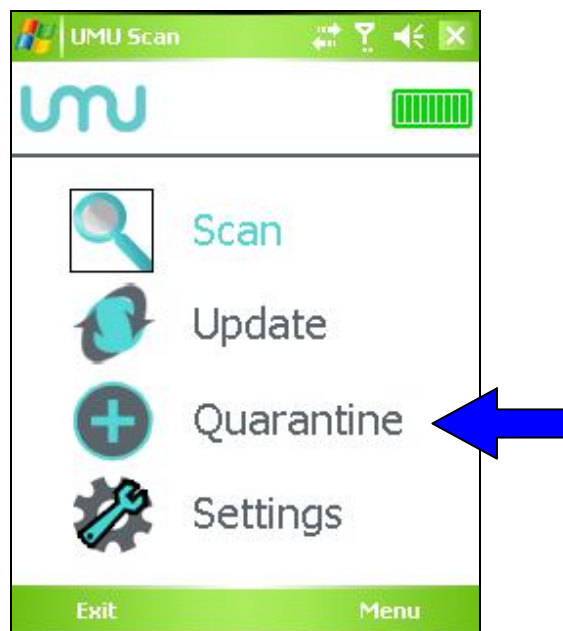


Figure 12: Quarantine button

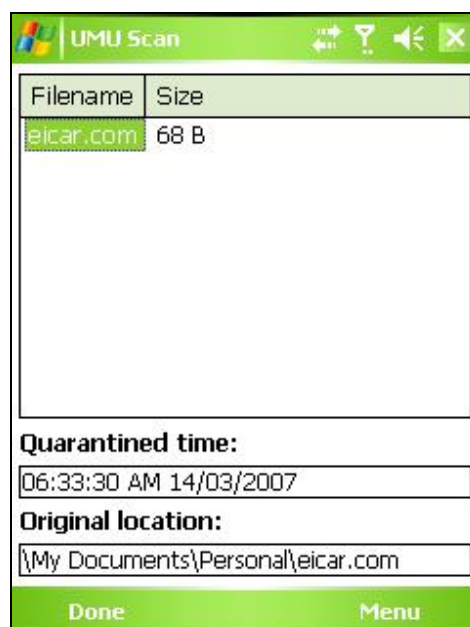


Figure 13: Quarantine screen

To delete quarantined viruses, select the virus and press Delete. To delete all quarantined viruses, choose Options, and then Delete All.
To restore quarantined viruses, select the virus and press Restore.
Once you have restored or deleted the viruses you require, press Done to return to the main menu screen.

Updates

To update the program and virus definitions, press the Update button on the main menu screen.

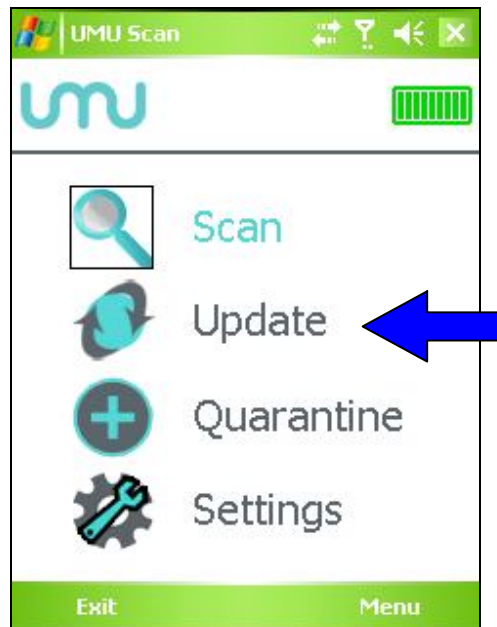


Figure 14: Update button

You can also update by pressing the UMU Scan icon on your Today page and choosing UMU Update in the pop up menu. Whichever way you run update, you will be asked if the program is allowed to check for an update on the internet for this and all future attempts.



Figure 15: Update pop up

If you want to get any available updates, click Yes; if you do not, press No.



Figure 16: Update screen

If updates are available, they will be downloaded and you will be asked if you want to install them, select Yes and the update is installed automatically. You can update UMU Scan either using your device's internet connection or via ActiveSync® and your computer.

Settings

UMU Scan allows you to set reminders to scan and update as well as change many other settings. On the main menu, choose Settings.

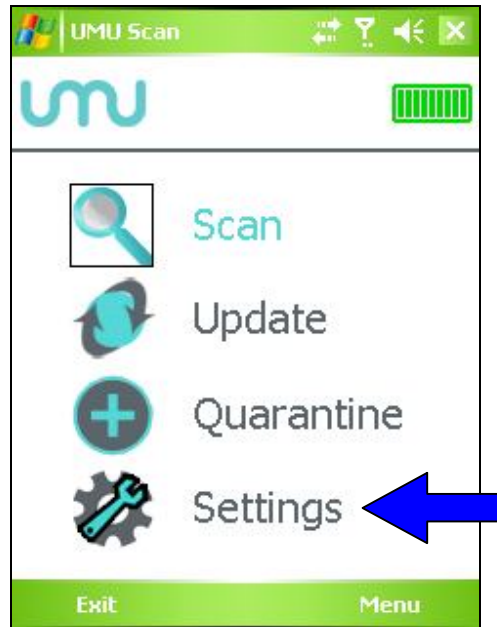


Figure 17: Settings button

This will display the following screen:

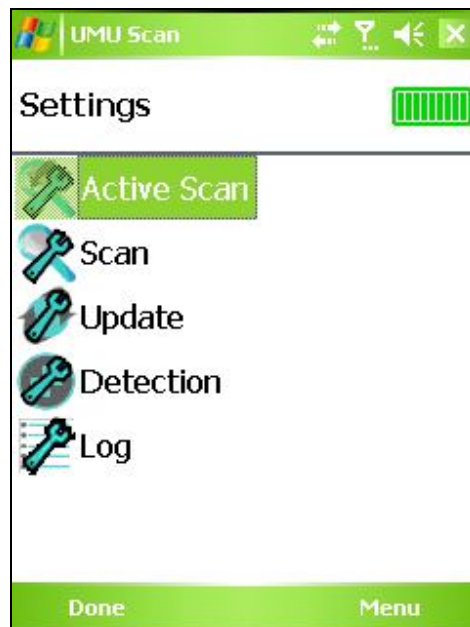


Figure 18: Options screen

From here, select the area of the program you wish to change. You can also restore all the settings to their default values by selecting Menu and then choosing Restore Defaults.



Figure 19: Active scan settings screen

With Active scan enabled, all files on the device are scanned automatically in the background.



It is not recommended that you disable Active scan as this could leave your device at risk from infection.

With “On insertion” selected for Auto scan card whenever a storage card is inserted you will be prompted to scan the card for any infected files.



By default, the options are set as follows:

- **Active scan: Enabled**
- **Auto scan card: On insertion**

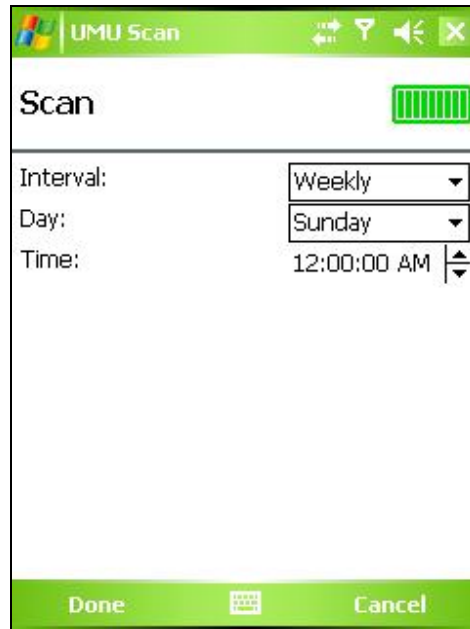


Figure 20: Scan settings screen

If you want to turn off the scheduler so you do not receive prompts to scan, choose the interval of off and click Done.



It is not recommended that you turn off the Scan prompts as this could leave your device at risk from infection.

You can set the scheduler to remind you to scan on a daily, weekly or monthly basis. Choose the interval and then choose the day, date and time you would prefer. Once you have made all the changes you require, click Done and you will be returned to the settings screen.



By default, the options are set as follows:

- **Interval: Weekly**
- **Day: Sunday**



Figure 21: Update settings screen

If you want to turn off the scheduler so you do not receive prompts to update, choose the interval of off and click Done.



It is not recommended that you turn off the Update prompts as this could leave your device at risk from infection.

You can set the scheduler to remind you to update on a daily, weekly or monthly basis. Choose the interval and then choose the day, date and time you would prefer. Once you have made all the changes you require, click Done and you will be returned to the settings screen.



By default, the options are set as follows:

- **Interval: Weekly**
- **Day: Sunday**

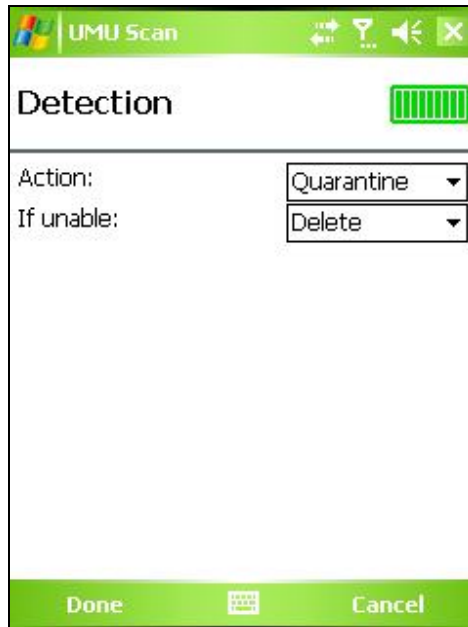


Figure 22: Detection settings screen

The settings on this screen allow you to specify what will happen when an infected file is detected. An infected file can be quarantined, deleted or simply logged. If quarantine or delete is selected a backup option is available in case the first action cannot be completed.



By default, the options are set as follows:

- **Action: Quarantine**
- **If unable: Delete**

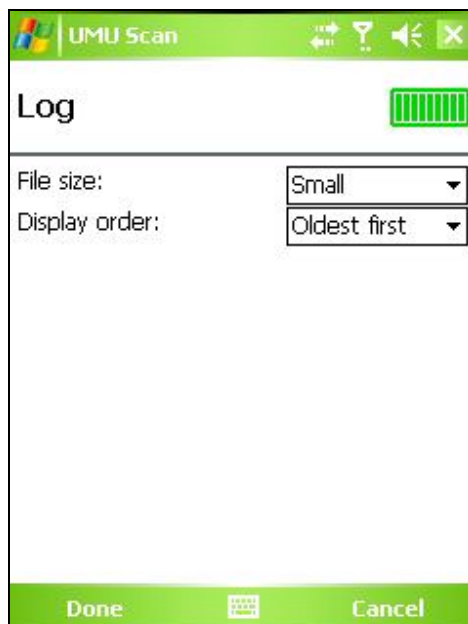


Figure 23: Log settings screen

This settings screen allows you to choose the maximum size for the log file and if it should be displayed starting with the newest or oldest record first.



By default, the options are set as follows:

- **Log file size: Small**
- **Display order: Newest first**

Exiting

In order to exit UMU Scan, click on the Exit button in the main menu. The program will close but will continue protecting your device in the background.

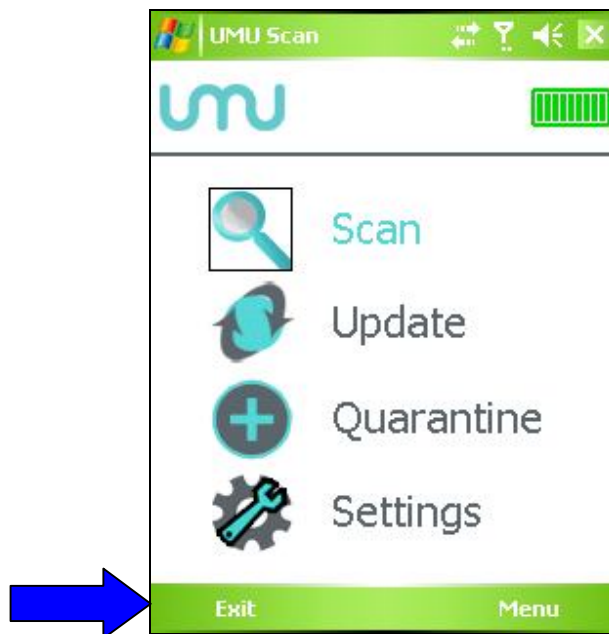


Figure 24: Exit button

Uninstalling

In order to uninstall the UMU Scan program, select Settings in the Start menu and choose System.

In System, choose Remove Programs and you will be shown a list of programs you have installed. Choose UMU Scan and click Remove. You will be asked to confirm that you want to remove UMU Scan permanently, if you want to remain protected, click No; click Yes to remove UMU Scan from your device completely. After you have uninstalled UMU Scan, your device will no longer be protected from viruses.

Microsoft® Windows® Smartphone Device

Running UMU Scan

Choose Start and scroll down to UMU Scan. Choose UMU Scan and product activation will start.

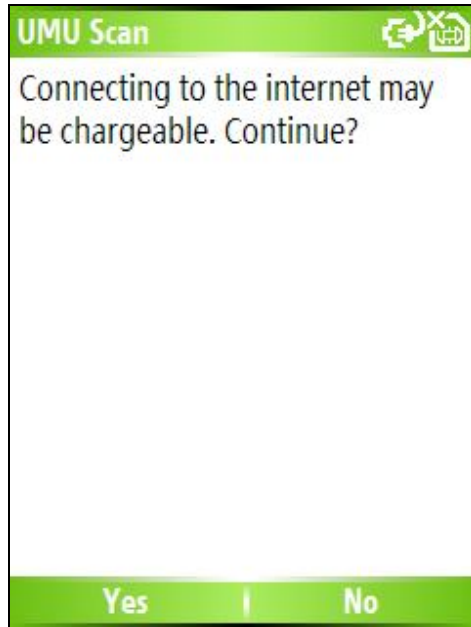


Figure 25: Activation

Next, you will be asked to enter your Product Key. If the server has already found your license this step will be bypassed.

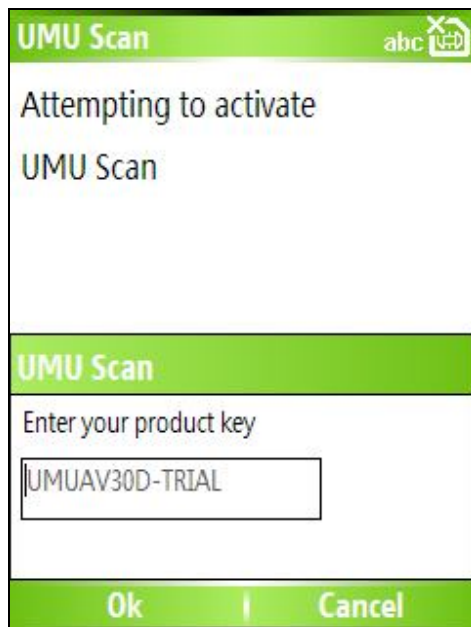


Figure 26: Enter product key

Once a valid product key has been entered, you will be asked to accept the license.

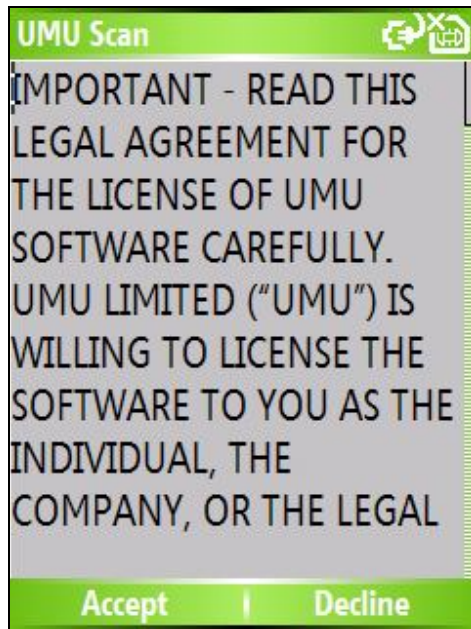


Figure 27: License

Finally, you will be shown your license details.

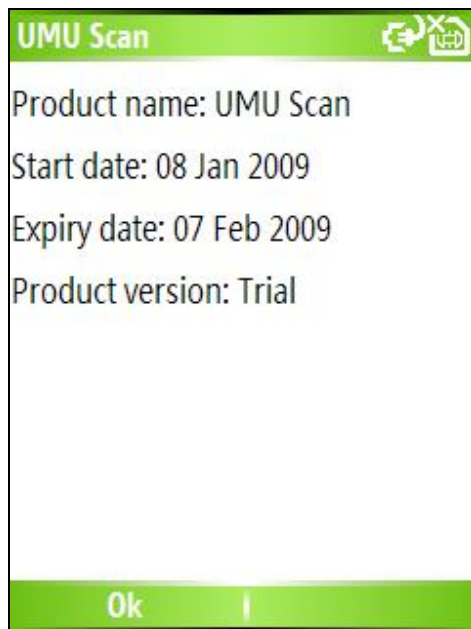


Figure 28: License details

Once the product has been activated, the menu screen will be displayed.

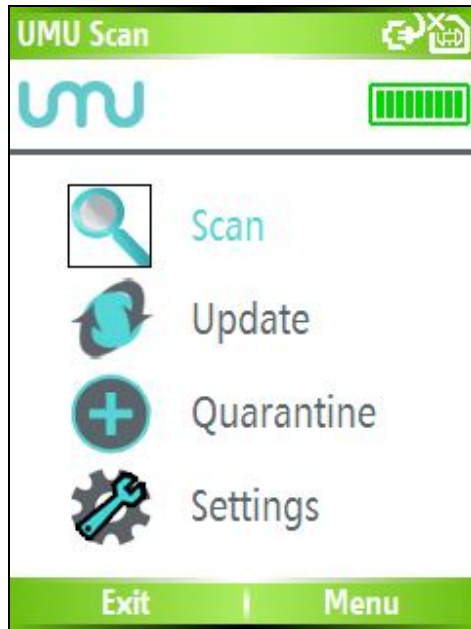


Figure 29: Smartphone menu screen

Status

For information about when the last scan was performed and if an update is due choose Status from the main menu.

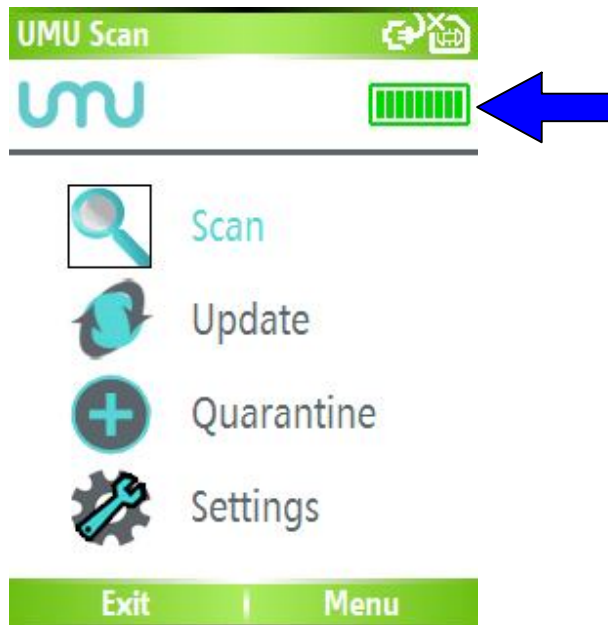


Figure 30: Status on the menu screen

Green indicates that both active scan and scan prompts are enabled, update prompts are enabled, a scan has run recently, and the program is up to date.
 Amber indicates that scan prompts are disabled or it has been over a week since the last update or it has been over two weeks since the last scan.
 Red indicates that active scan is disabled, or it has been more than two weeks since the last update, or the action on detection is set to "Log only".

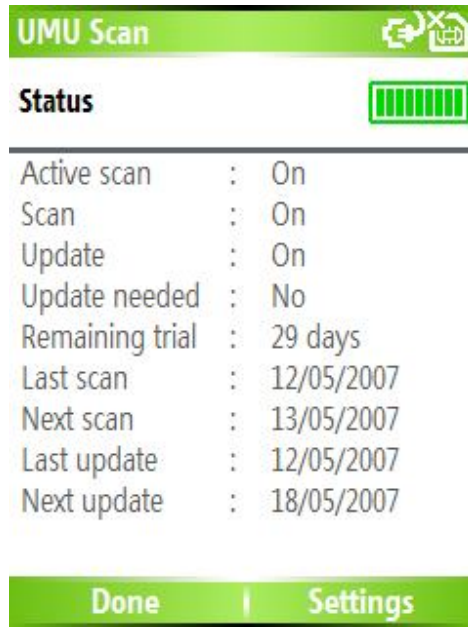


Figure 31: Status screen

Scanning

On the main menu screen choose the Scan icon and the scan will start.

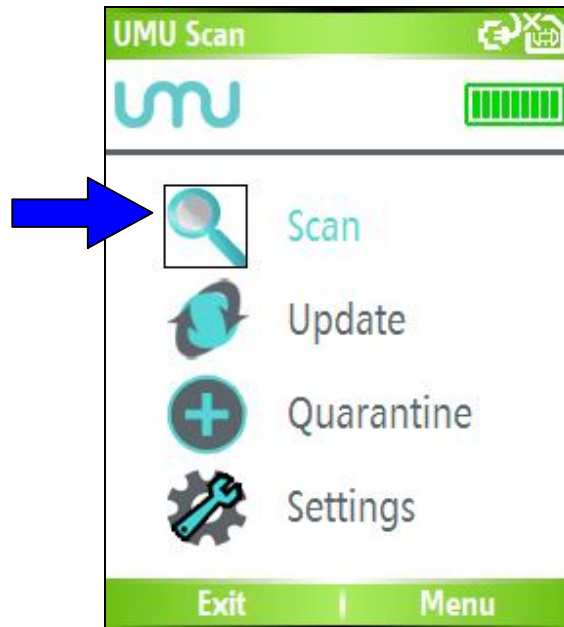


Figure 32: Scan icon

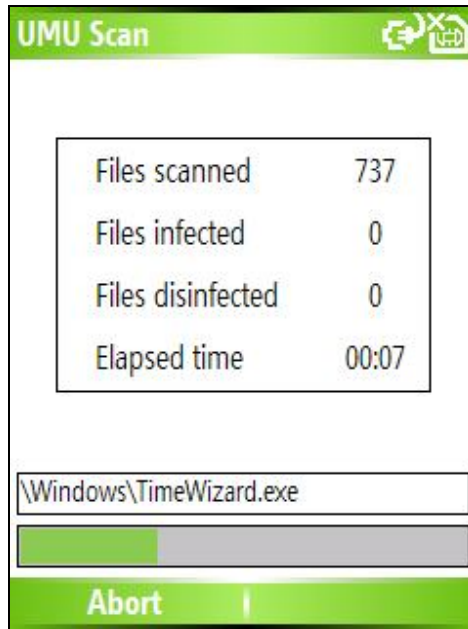


Figure 33: Scan screen

If any viruses are found during the scan, they are automatically quarantined. If you wish to abort the scan, click on the Abort button. You will be asked whether you are sure you want to abort the scan. If you do not want to abort, choose No and the scan will continue to the end as normal. If you do want to abort, choose Yes and the scan will stop. When the scan completes or is aborted, the scan report screen appears.

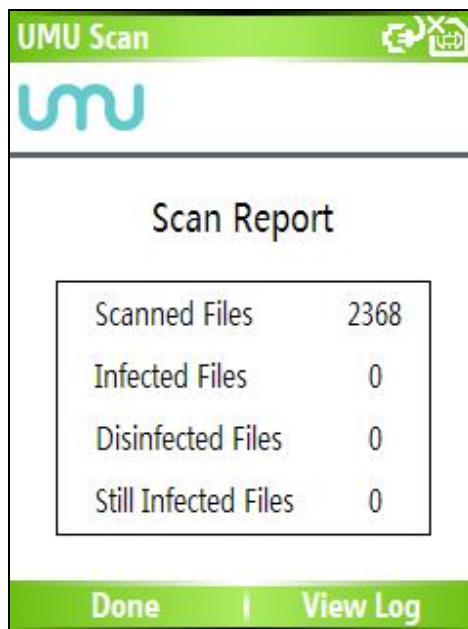


Figure 34: Scan report screen

At this point, you have the option to either return to the menu screen or go on to view the full log. If you choose to View Log, the scan log screen appears:

UMU Scan	
Time	Log Entry
05/12/2007	
02:04:17	On Access scanner started
02:04:24	On Demand scan started
02:05:01	On Demand scan completed

Done | Clear Log

Figure 35: Scan log screen

The log screen details the time and date of the following actions:

- Scan started
- Scan completed
- Scan aborted
- Viruses found and quarantined
- Viruses restored
- Viruses deleted

Once you have reviewed the details, click Done to return to the scan report screen then press Home to return to the main menu screen.

Quarantine

All the viruses found are quarantined in an encrypted file. To view the quarantined files, choose Quarantine in the main menu.

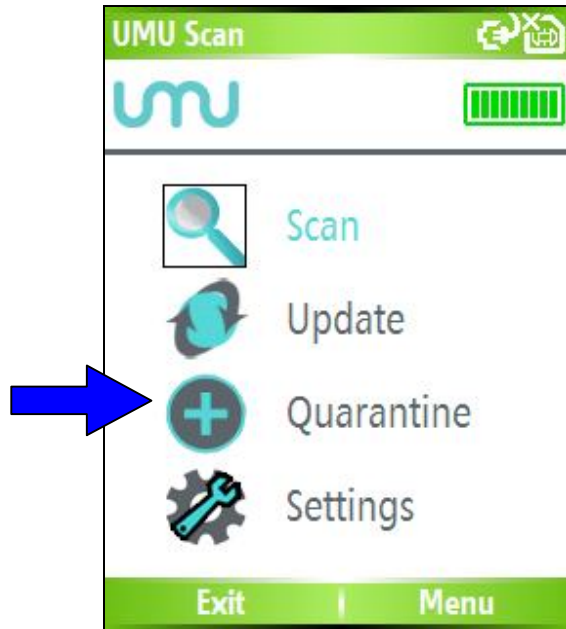


Figure 36: Quarantine icon

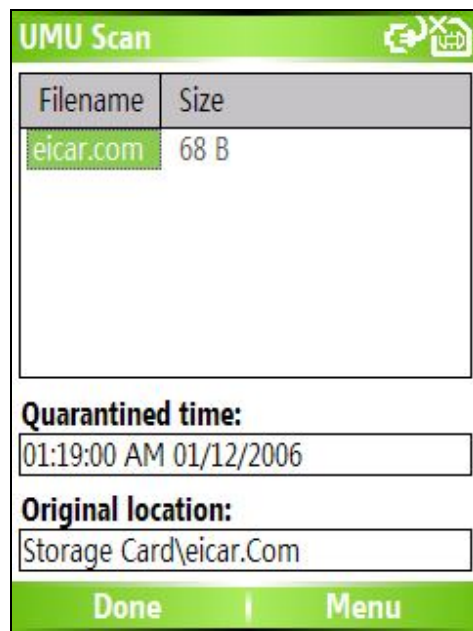


Figure 37: Quarantine screen

To delete quarantined viruses, select the virus, choose Options, and then Delete. To delete all quarantined viruses, choose Options, and then Delete All.

To restore quarantined viruses, select the virus, choose Options, and then Restore.

Once you have restored or deleted the viruses you require, choose Done to return to the main menu screen.

Updates

To update the program and virus definitions, choose the Update icon on the main menu screen.

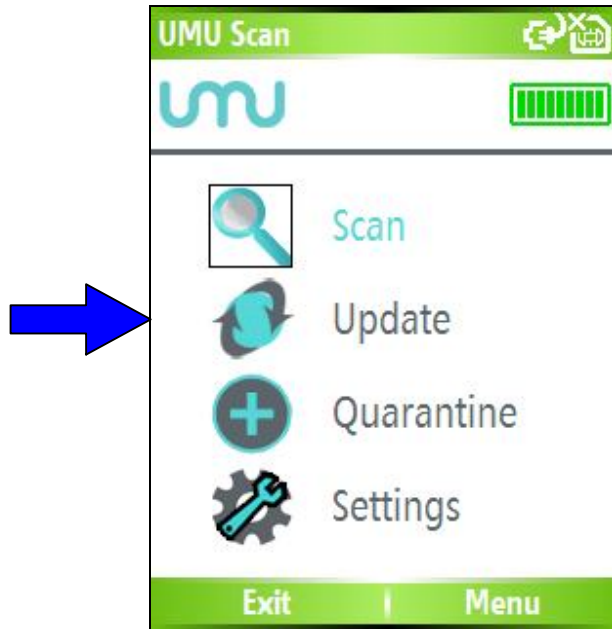


Figure 38: Update icon

You will be asked if the program is allowed to check for an update on the internet for this and all future attempts. Choose Yes to update and No to return to UMU Scan.

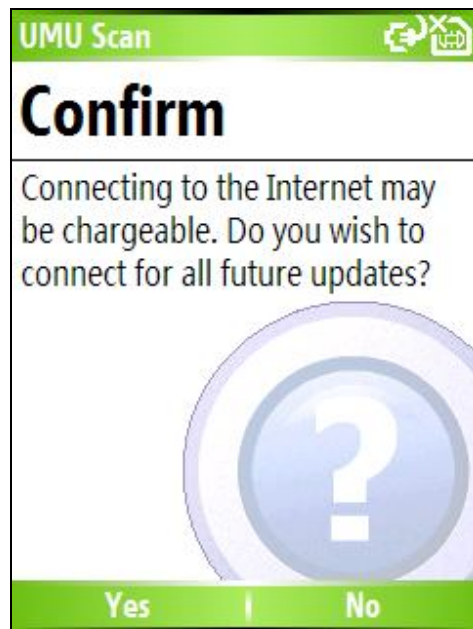


Figure 39: Update confirmation

If updates are available, they will be downloaded and you will be asked if you want to install them. If you select Yes, the update will be installed automatically. You can update UMU Scan either using your device's internet connection or via ActiveSync® and your computer.

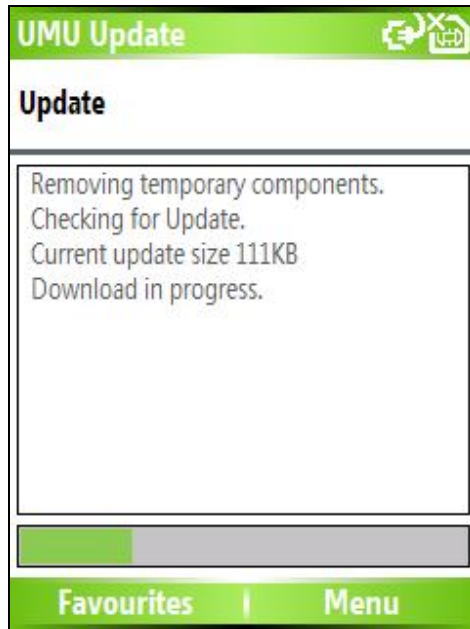


Figure 40: Update screen

Settings

UMU Scan allows you to set reminders to scan and update as well as change many other settings.. On the main menu, choose the Settings icon.

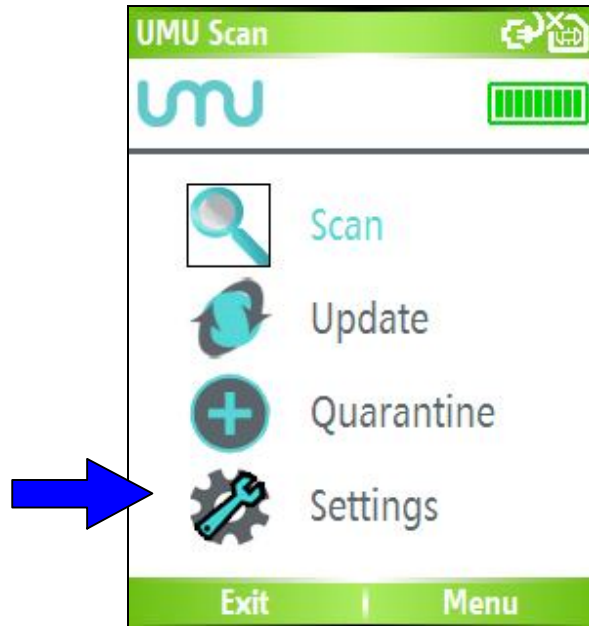


Figure 41: Options icon

This will display the following screen:

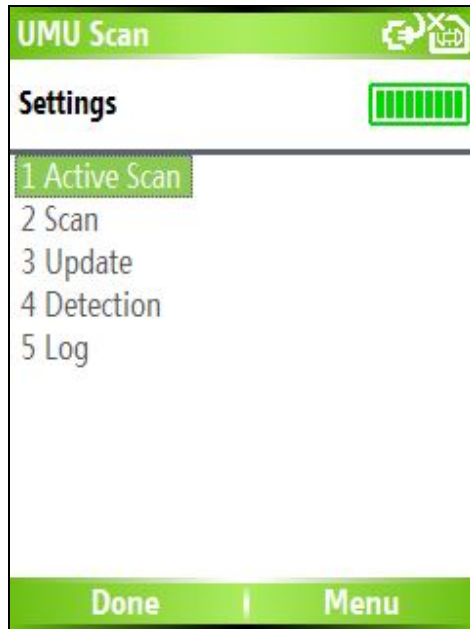


Figure 42: Options screen

From here, select the area of the program you wish to change. You can also restore all the settings to their default values by selecting Menu and then choosing Restore Defaults.

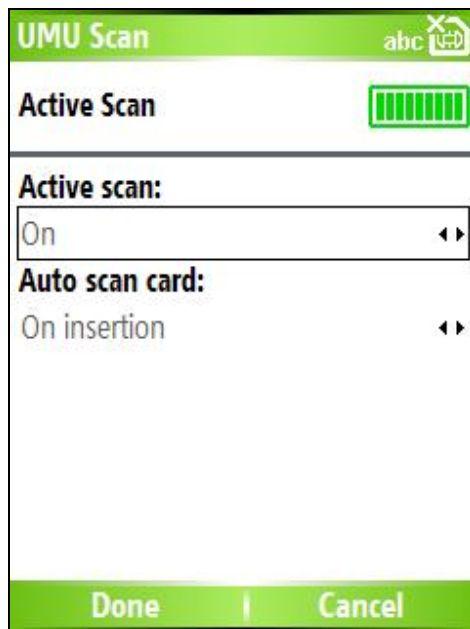


Figure 43: Active scan settings screen

With Active scan enabled, all files on the device are scanned automatically in the background.



It is not recommended that you disable Active scan as this could leave your device at risk from infection.

With “On insertion” selected for Auto scan card whenever a storage card is inserted you will be prompted to scan the card for any infected files.



By default, the options are set as follows:

- **Active scan: Enabled**
- **Auto scan card: On insertion**

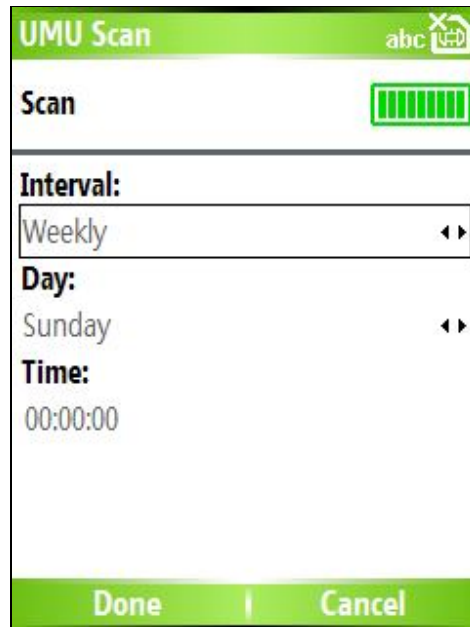


Figure 44: Scan settings screen

If you want to turn off the scheduler so you do not receive prompts to scan, choose the interval of off and click Done.



It is not recommended that you turn off the Scan prompts as this could leave your device at risk from infection.

You can set the scheduler to remind you to scan on a daily, weekly or monthly basis. Choose the interval and then choose the day, date and time you would prefer.

Once you have made all the changes you require, click Done and you will be returned to the settings screen.



By default, the options are set as follows:

- **Interval: Weekly**
- **Day: Sunday**

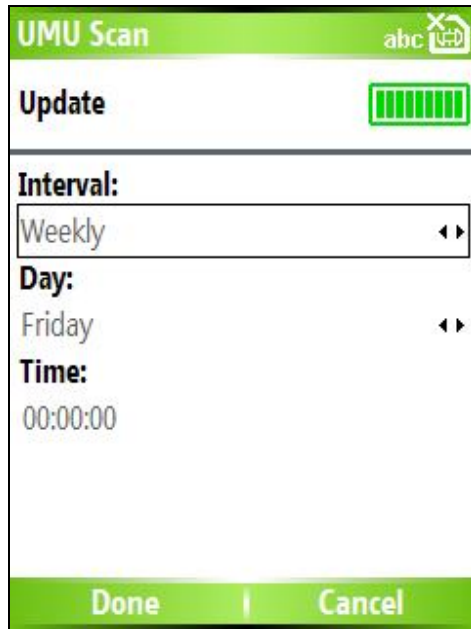


Figure 45: Update settings screen

If you want to turn off the scheduler so you do not receive prompts to update, choose the interval of off and click Done.



It is not recommended that you turn off the Update prompts as this could leave your device at risk from infection.

You can set the scheduler to remind you to update on a daily, weekly or monthly basis. Choose the interval and then choose the day, date and time you would prefer. Once you have made all the changes you require, click Done and you will be returned to the settings screen.



By default, the options are set as follows:

- **Interval: Weekly**
- **Day: Sunday**

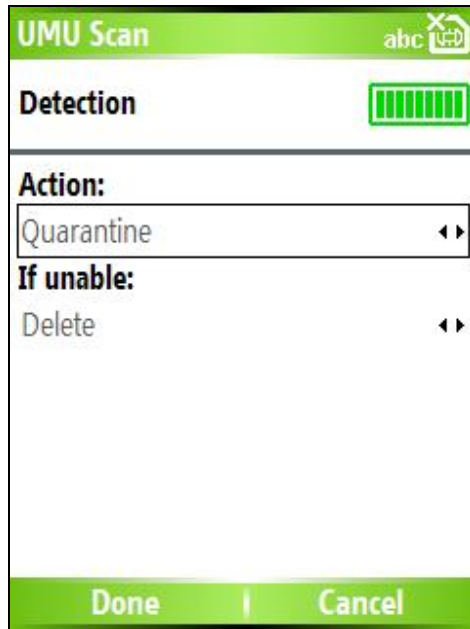


Figure 46: Detection settings screen

The settings on this screen allow you to specify what will happen when an infected file is detected. An infected file can be quarantined, deleted or simply logged. If quarantine or delete is selected a backup option is available in case the first action cannot be completed.



By default, the options are set as follows:

- **Action: Quarantine**
- **If unable: Delete**

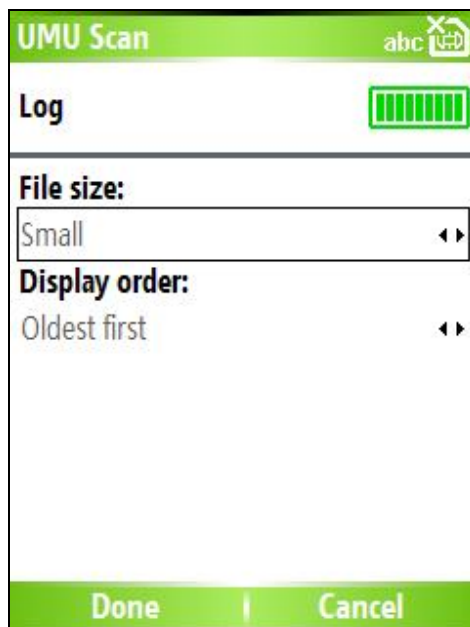


Figure 47: Log settings screen

This settings screen allows you to choose the maximum size for the log file and if it should be displayed starting with the newest or oldest record first.



By default, the options are set as follows:

- **Log file size: Small**
- **Display order: Newest first**

Exiting

In order to exit UMU Scan, click on the Exit button in the main menu. The program will close but will continue protecting your device in the background.

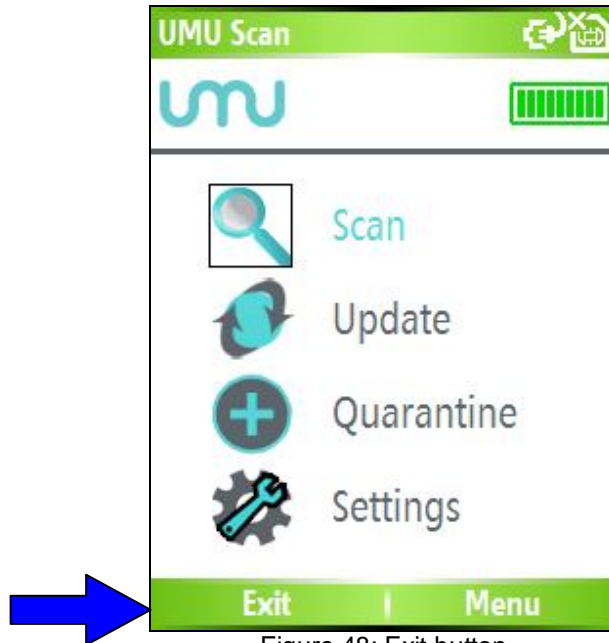


Figure 48: Exit button

Uninstalling

In order to uninstall the UMU Scan program, select Start, scroll down and select Settings. In Settings, scroll down and select Remove Programs. You will be shown a list of programs you have installed. Choose UMU Scan, press Menu, and choose Remove. You will be asked to confirm that you want to remove UMU Scan permanently, if you want to remain protected, click No; Click Yes to completely remove UMU Scan from your device. After you have uninstalled UMU Scan, it will no longer protect your device from viruses.

Technical Support

This section gives you instructions on how to find additional technical support.

In program

There is help within the program. On Pocket PC devices click the Start menu and select Help. On Smartphone devices select Menu and then Help.

Frequently Asked Questions

You can view a list of frequently asked questions on the internet at <http://www.umuglobal.com/support.php>; this site can also be viewed on your device.

Email Support

If you have a question or problem and cannot find a solution in this manual or the FAQ, you can email the support department at support@umuglobal.com.

We recommend that you check the User Manual and the FAQs on the website before contacting the support department with your question as it may have been answered before.

Telephone Support

If you would like to speak to a member of our support department, please telephone:

+44 (0) 1695 735801

Our telephone support line is open Monday to Friday 9am to 5pm GMT/BST except during public or bank holidays.

If you call outside of these hours, you may leave a message and a member of our support department will get back to you.

About UMU Limited

UMU Limited designs and builds innovative security software for mobile devices running Symbian™ and Windows® Mobile operating systems.

We guarantee to deliver fast responses to security alerts and to tackle any threat to your mobile devices with a system that is easy to use, cost effective and will not drain your battery.

We pride ourselves on innovative solutions and customer service, made possible by a dedicated and experienced team of staff.

We are dedicated to mobile security.

Born out of the belief that the AV industry as a whole was failing to offer adequate, focused, and specifically designed protection for mobile devices, UMU Limited was founded in 2004 to address the need for mobile security software. An expanding company based in the North West of England, UMU aims:

- To produce effective, mobile specific security software
- To allow mobile device users to utilise the full capability of their device without fear of infection or intrusion
- To deliver outstanding ease of use
- To deliver swift responses to security alerts

Dependable mobile security solutions are only as good as the research and development that have been expended upon them. With this in mind, UMU is a mobile only software provider so we are not constrained or distracted by desktop PC or server software requirements and footprints.

Friendly, Professional and Approachable

We are an ethical company who have produced the solutions that we feel are important and we have a friendly, professional and approachable team. We have not 'cut down' existing desktop PC or server software for use on mobile devices. All of UMU's software is developed in-house specifically for mobile devices, guaranteeing dedication to the customer's needs and requirements and the most efficient and effective software available.

Visit our website at <http://www.umuglobal.com/> to learn more about products, our services, and us.